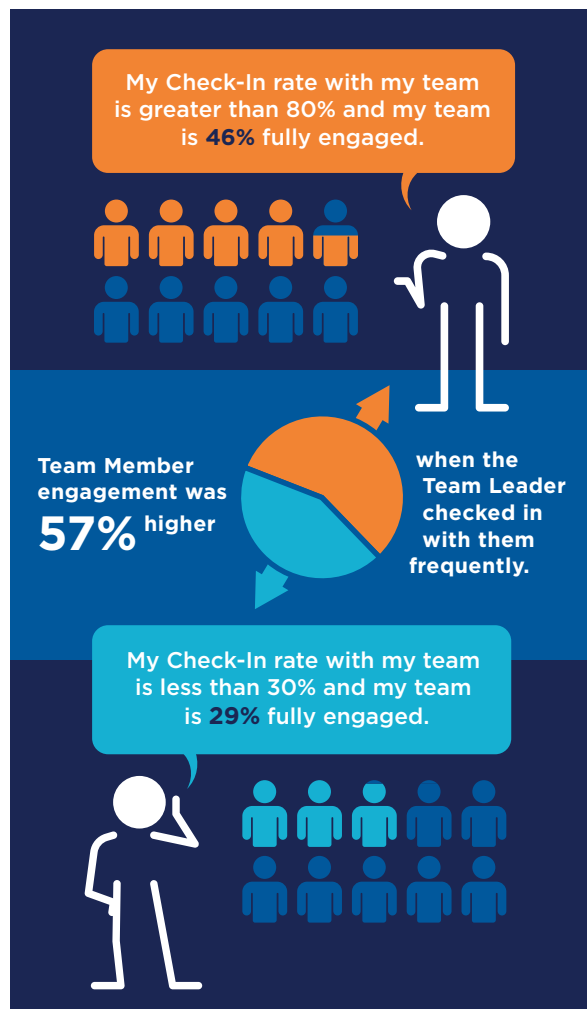


The Power of Conversation

Engagement Solved



It turns out conversations are even more critical than we all thought and we have the data to back it up.



Frequency Trumps Quality

Average conversations that take place very frequently are significantly more effective than amazing conversations that happen infrequently. StandOut®, powered by ADP®, drives frequent conversations through Check-Ins.

When Check-Ins Occur Frequently, Engagement Rises Significantly

When Team Members complete a StandOut Check-In, employee engagement increases. When Team Leaders talk to Team Members about StandOut Check-In content, engagement increases even more. When the frequency of StandOut Check-In conversations are sustained, so is the engagement level.

Creating Engagement That Lasts

We know your leaders are busy. That's why Check-Ins prompt Team Members to answer a few simple questions that get to the heart of what drives engagement and performance. Check-Ins tell team leaders the two things they need to know about each person on their team: What are they working on? And how can I help?

Based on decades of research, StandOut® combines coaching and technology to build engagement, activate talent, and drive results.

Learn how the power of conversation can work for you. Visit tmbc.com.